

# PALM ISLES, A P.U.D.

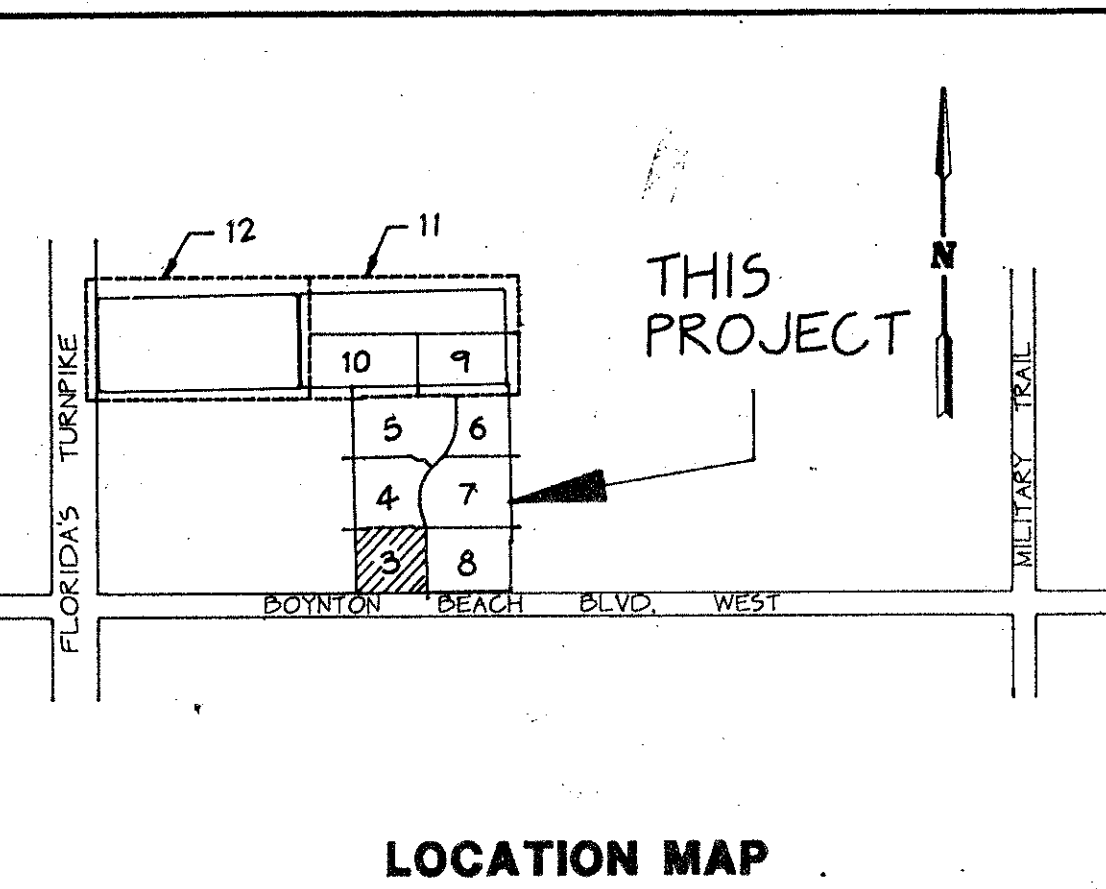
A REPLAT OF A PORTION OF BLOCK 49 OF PALM BEACH FARMS COMPANY PLAT NO. 3 AS RECORDED IN PLAT BOOK 2, PAGES 45 THROUGH 54 INCLUSIVE OF THE PUBLIC RECORDS OF PALM BEACH COUNTY, FLORIDA IN SECTION 21, TOWNSHIP 45 SOUTH, RANGE 42 EAST, PALM BEACH COUNTY, FLORIDA

THIS INSTRUMENT PREPARED BY JAMES E. PARK, P.L.S.  
 WILLIAMS, HATFIELD & STONER, INC. - ENGINEERS PLANNERS SURVEYORS  
 1325 SOUTH CONGRESS AVENUE, SUITE 118, BOYNTON BEACH, FLORIDA 33426

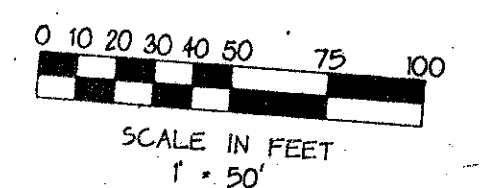
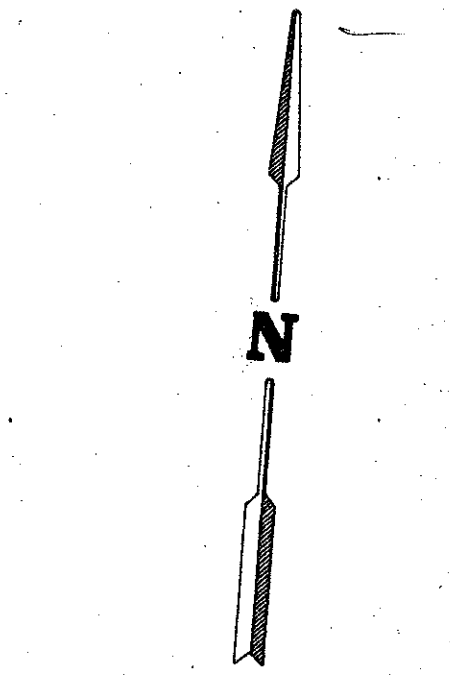
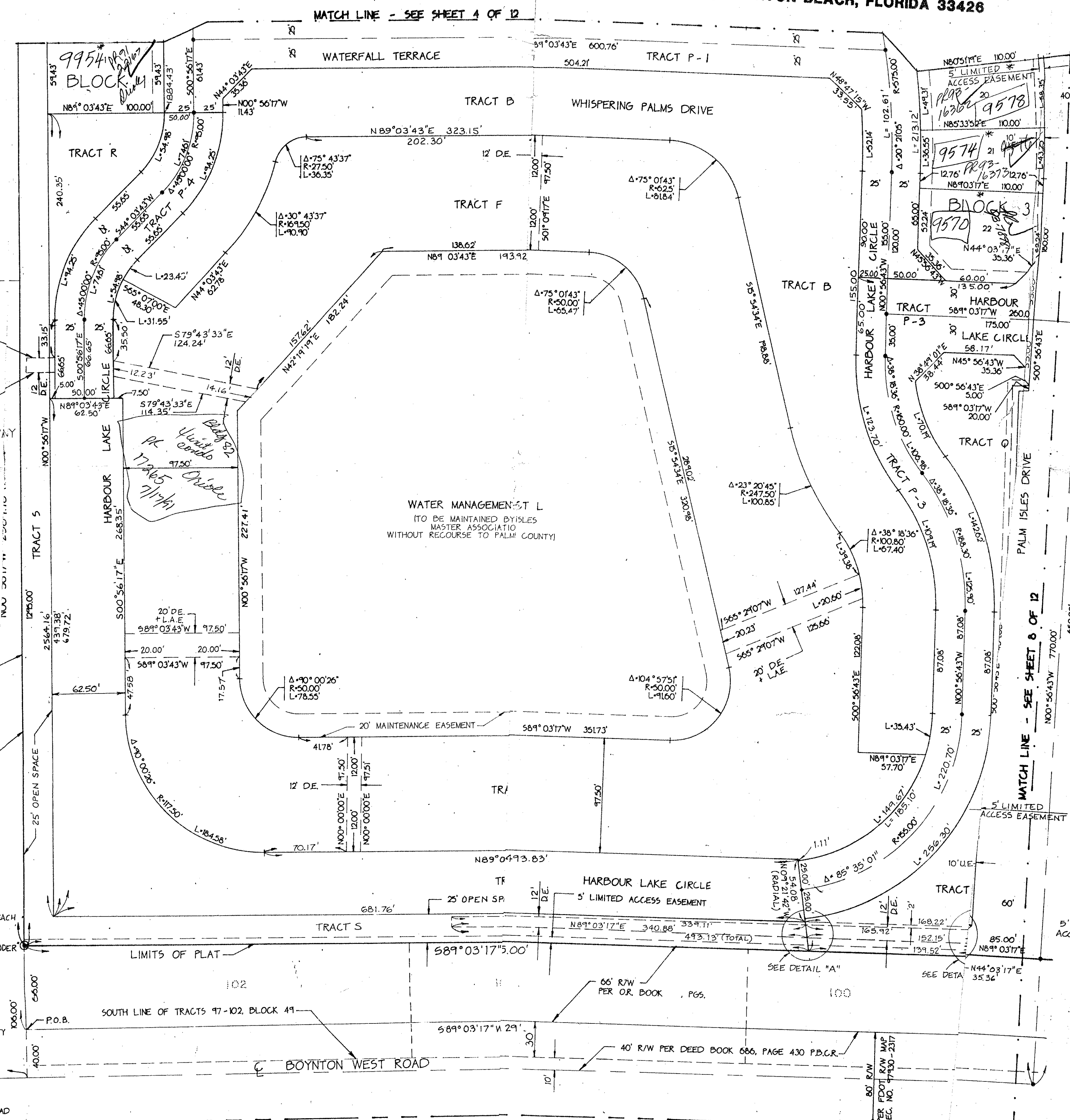
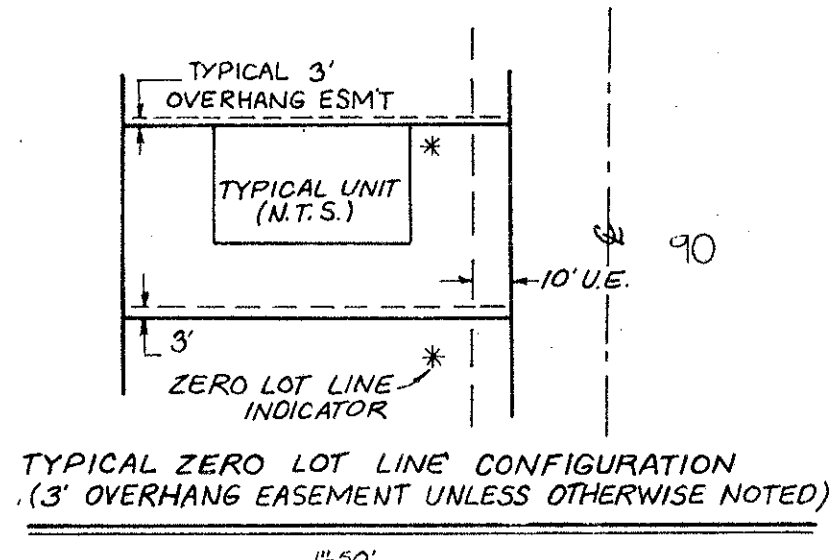
118

571-001

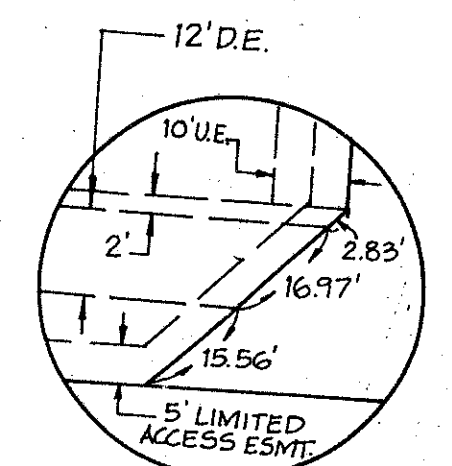
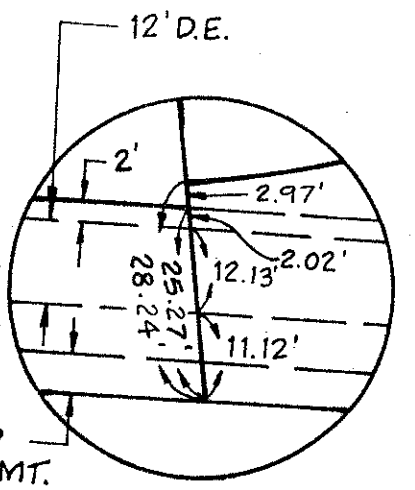
SHEET 3 OF 12



LOCATION MAP



NOTE: SHEETS 3 THROUGH 10 AT 1" = 50'  
 SHEETS 11 AND 12 AT 1" = 100'



PLAT NO. 185A  
 ZONING R5  
 81-92  
 2/15/15  
 SUNC

TAL 443

Plat. 87-92  
 Alloc. #0001  
 0571-001

**PALM ISLES, A P.U.D.**